

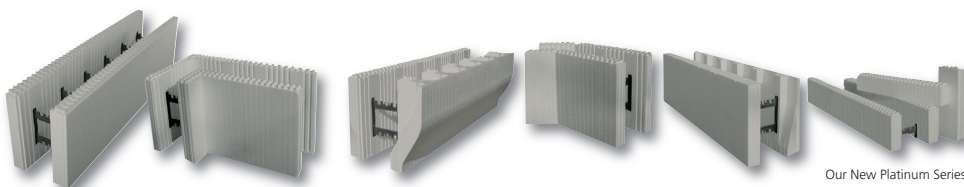


In the future homes will sell energy, not buy it.

Are you ready?

LOGIX[®]
INSULATED CONCRETE FORMS

Good. Solid. Green.[™]





Net-Zero Residence Built With LOGIX



Net-zero ready.

The next wave of green buildings will be net-zero – buildings that sell energy back to the grid instead of buying it.

LOGIX is “net-zero” ready.

With a superior R-value of R24 built into its DNA, LOGIX helps you create an airtight building envelope today for the quality of thermal performance that will be expected tomorrow.

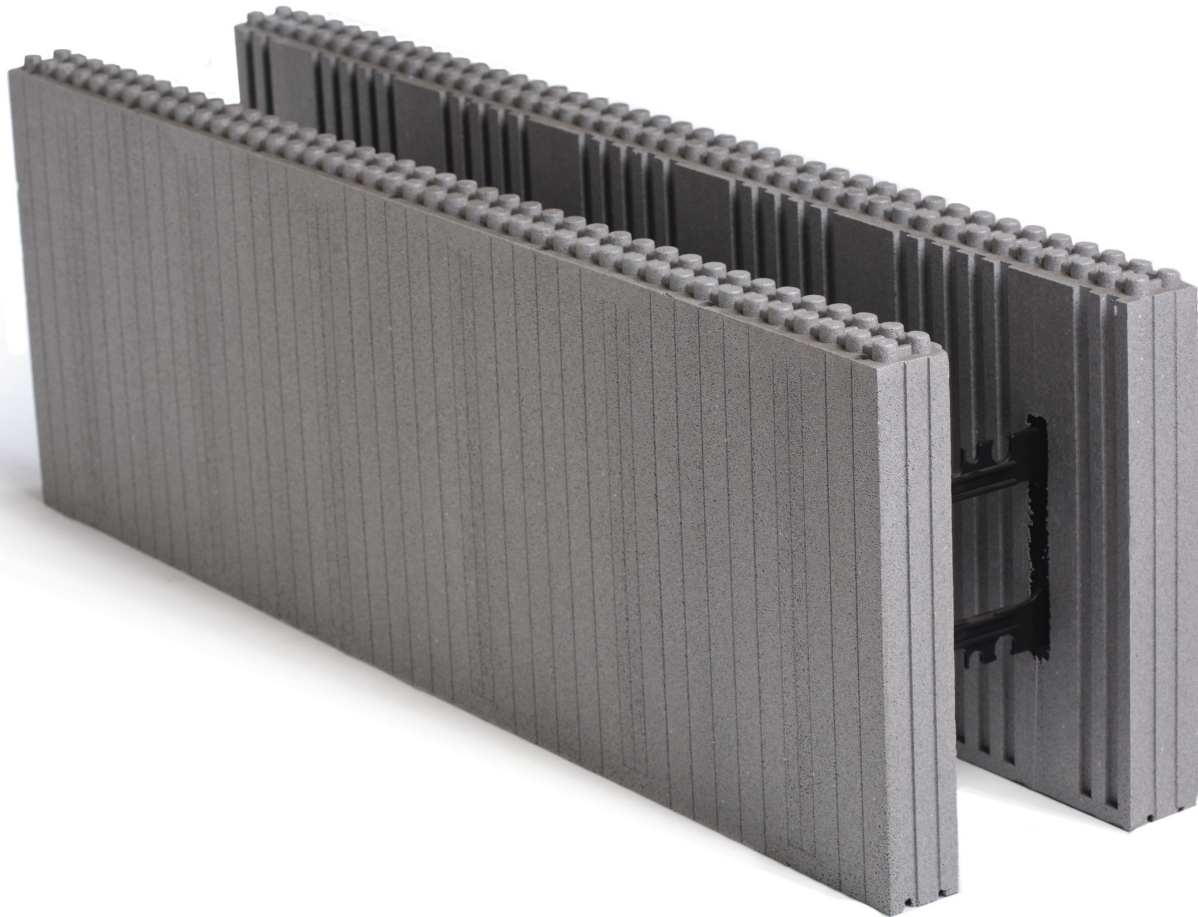
Today’s super-efficient LOGIX homes routinely cut energy bills in half and can achieve HERS Scores of less than 40, which means they are outperforming the existing building code by 60%.

Combined with cost-effective renewable energy generation LOGIX is the solution to building commercially viable net-zero homes in the future.

LOGIX is tomorrow’s smarter technology, today.

Key Components of this LOGIX Net-Zero Home

- All exterior walls and the indoor pool constructed with LOGIX.
- Geothermal main heating system
- Electricity generated by rooftop photovoltaic cells
- Indoor pool heated by solar heated water collectors
- Home and pool also utilize passive solar technology
- Roof is insulated with R-38 batts and 1½ inches of urethane
- Concrete-based dark-gray roof shingles absorb heat
- Cool air is drawn from the pool atrium and circulated through the home



PLATINUM SERIES

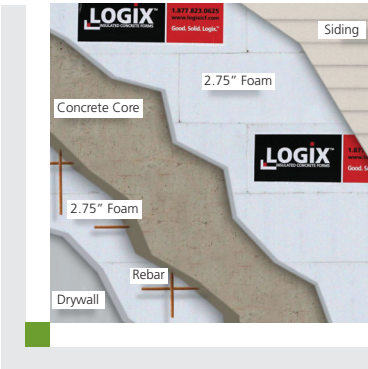
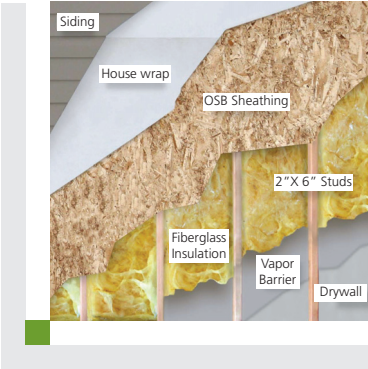
Introducing LOGIX Platinum Series. To boldly go to net-zero and beyond.

LOGIX Platinum Series is powered by millions of graphite infrared absorbers and heat reflectors that reduce thermal conductivity.

- LOGIX Platinum Series provides more R-value without increasing wall thickness.
- LOGIX Platinum Series delivers R27 with our regular 2.75" panel thickness.
- That's 23% more R-value than most ICF's offer.
- LOGIX Platinum Series is better for contractors as well. The elimination of the sun glare from regular white panels makes it easier on the eyes.

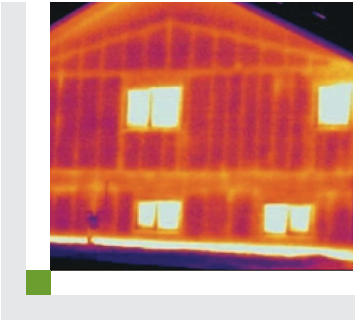


LOGIX versus wood-frame construction.

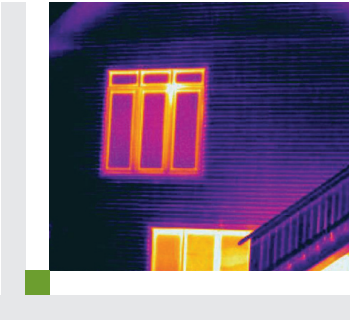


	Wood-frame wall system	LOGIX
Energy Efficiency	<ul style="list-style-type: none"> • Thermal bridging • Insulation gaps • Eroding R-Value 	<ul style="list-style-type: none"> • The smarter technology • No thermal bridging • Continuous insulation • Constant R-Value of up to R27 for life
Sustainability	<ul style="list-style-type: none"> • Conventional construction has resulted in insurance losses that have outstripped the growth of GDP by 10 times in the last 30 years. 	<ul style="list-style-type: none"> • The stronger technology • Over 9 times stronger than wood-frame construction • 4-hour fire rating • Wind-rated up to 200 MPH • Won't rot
Health & Comfort	<ul style="list-style-type: none"> • May contain adhesives and VOCs that off-gas • Wood and moisture provide an ideal environment for mold 	<ul style="list-style-type: none"> • The friendlier technology • EPS and concrete are non-toxic and do not off-gas • No nutrient source exists in the structure for mold growth

Unlike traditional walls, the LOGIX ICF wall system prevents costly energy loss and dramatically lowers your energy bills.



Thermal image of a conventionally built home showing heat loss across the entire wall.



Thermal image of a LOGIX home shows minimal heat loss, resulting in lower energy bills.

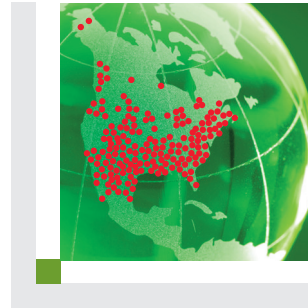
Support as superior as our products.



Locally deployed technical support staff



Installer training courses



Over 400 local stocking distributors and multiple manufacturing facilities across North America

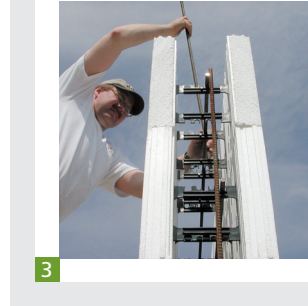
Six steps toward GOOD. SOLID. GREEN.



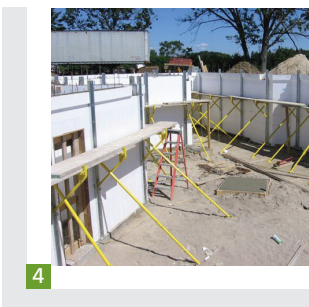
1 Prepare the job site



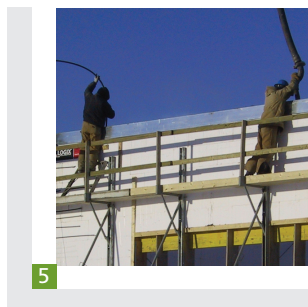
2 Place the first course



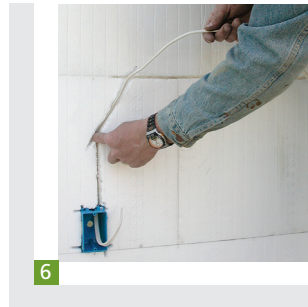
3 Place the rebar



4 Brace the wall



5 Pour the concrete



6 Install rough electrical and plumbing

Thousands of builders have taken LOGIX training programs and are available to offer you competitive pricing for your project. For more details and information, visit logixicf.com.

Naturally, LOGIX.

Although the up-front cost of a LOGIX home may be slightly higher than a traditional wood-framed home, the actual “overall living” cost is often lower when energy savings are considered.

This chart illustrates the difference between “price” and “cost” using general comparative estimates.

	Traditional Wood Frame	LOGIX
House Price	\$300,000	\$315,000
Monthly Mortgage	\$1,920	\$2,016
Monthly Energy Bill	\$350	\$150
Total Monthly Cost	\$2,270	\$2,166
Savings	\$0	\$104

The above are estimates only. Construction, mortgage and energy costs may vary depending on style/design and location of home.

The home built with LOGIX will save you approximately \$200 in monthly energy costs, allowing you to pay off your mortgage sooner.

Let's get started.

We can help you design your new LOGIX home, or we can help you integrate LOGIX into your existing home plans.

The Smarter, Faster and Stronger Technology.



Good. Solid. Green.™

For more information
Call toll free 1.888.415.6449
or visit www.logixicf.com

151 Paramount Road
Winnipeg, MB
Canada R2X 2W6
1.877.442.4465

54 1st St. NW
P.O. Box 373
Pelican Rapids, MN
USA 56572
1.877.823.0625

7-26318-TWP RD
531A
Acheson, AB
Canada T7X 5A3
1.888.453.5961

P.O. Box 16923
Wichita, KS
USA 67216
1.888.838.5038

#215-6333 Unsworth Rd.
Chilliwack, BC
Canada V2R 5M3
1.888.453.5961

106 Perma “R” Rd.
Johnson City, TN
USA 37604
1.800.251.7532

6829 Dale Rd
Port Hope, ON
Canada L1A 3W3
1.888.706.7709

31381 Pond Rd.
Building #2
McFarland, CA
USA 93250
1.888.453.5961



Webs are made entirely of recycled plastic. LOGIX foam panels are entirely recyclable.

* Energy Star for insulation is currently available only in the United States, and applies to residential construction only.